

Einpeisung  
Alimentation  
Power supply

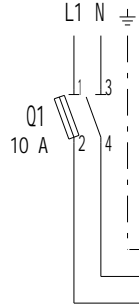
Der Schutz der Anlage entspricht  
der geltenden Normen.  
Protection de l'installation conforme  
aux normes en vigueur.  
Protection of the installation in  
conformity with the actual norms.

OPTION  
Störung  
Panne  
Trouble

OPTION  
Betriebsstundenzeiger  
Compteurs horaires  
Running hours meter

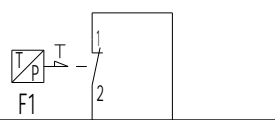
Erdung nach örtlichen Vorschriften!  
Mise à la terre conformément au réseau local!  
Earthing in accordance with local regulation!

230V 50Hz

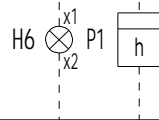
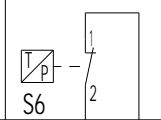


Kessel / Chaudière / Boiler

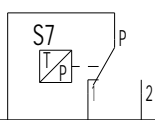
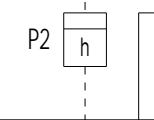
Sicherheitsebegrenzer  
Th./pr. sécurité  
Safety limiter



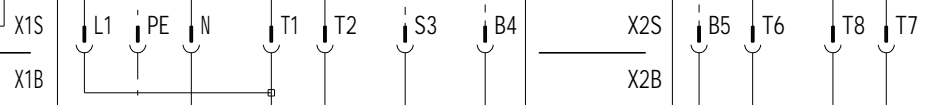
Begrenzer  
Limiteur  
Limiter



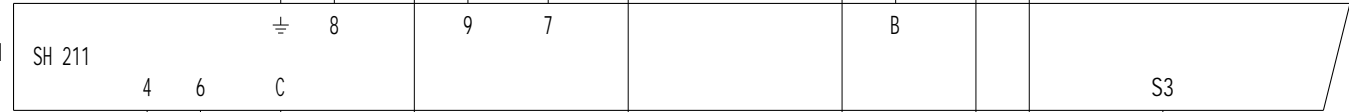
2 Stufige  
2 allures  
2 Stages



Prinzipdarstellung  
Schéma de Principe  
Basic circuit diagram

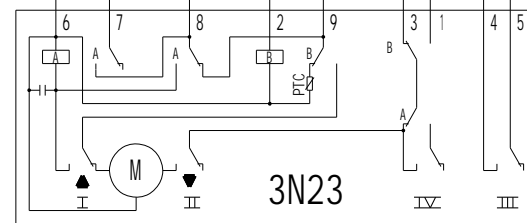


A1 SH 211



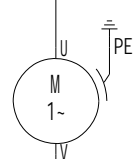
Stellantrieb  
Servomoteur  
Damper motor

Y10



Brennermotor  
Moteur du  
bruleur  
Burner motor

M1



Aend./Modificati on	Dat.	Vis.	gez. dess.	Dat.	Vis.
a AM 8686	27.11.98	Pru		02.07.98	
b			gez. dess.		
c			gepr. contr.	02.07.98	
d					



Art. N°:	13005326. A	Type	C 24. . 30 H201	Blatt/Page	1
Bez. /Des. 1	Schéma électrique	Schema Draw.	L03. 1. 0136	Tot. Bl /Pg	3
Bez. /Des. 2	Bruleur fuel 2 allures				

A

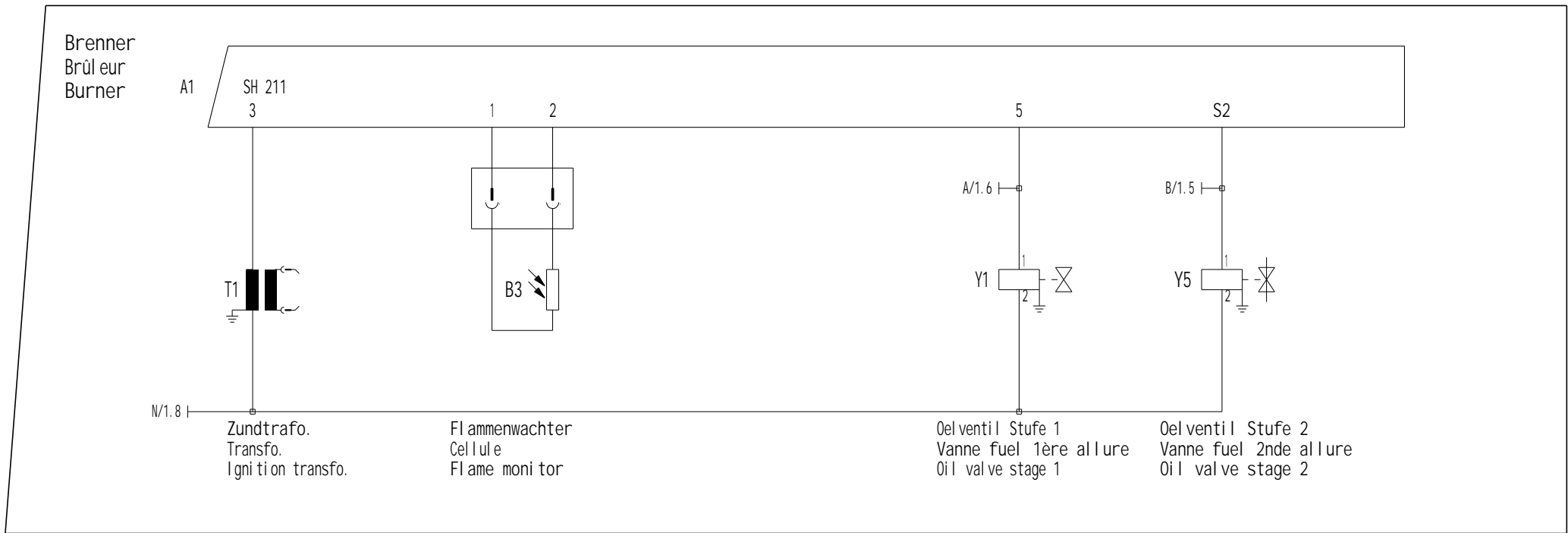
B

C

D

E

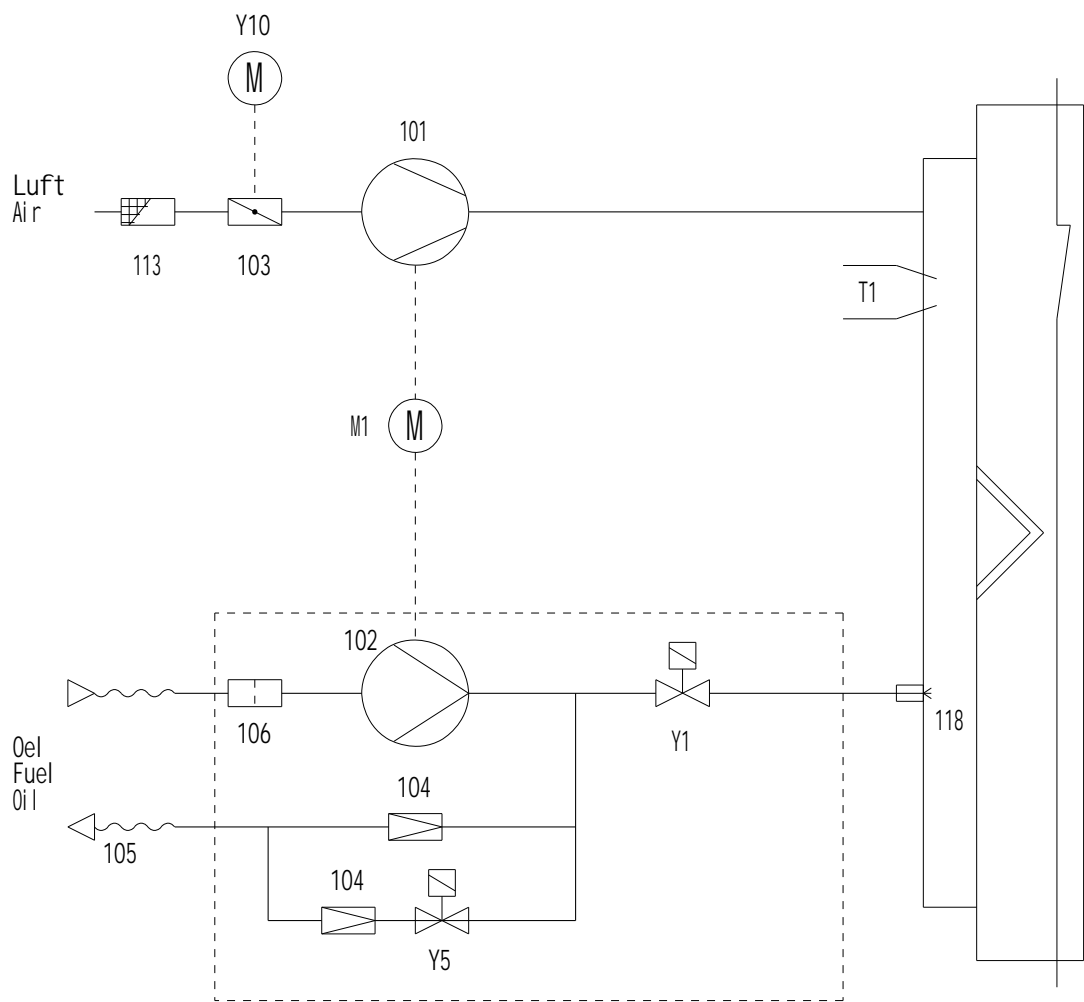
F



	Aend. /Modifi cation	Dat.	Vis.	gez.	Dat.	Vis.
a	AM 8686	27.11.98	Pru	gez.	02.07.98	
b				dess.		
c				gepr.	02.07.98	
d				contr.		



Art. N°:	13005326. A	Type	C 24. . 30 H201	Blatt/Page	2
Bez. /Des. 1	Schéma électrique	Schema Draw.	L03. 1. 0136	Tot. Bl /Pg	3
Bez. /Des. 2	Bruleur fuel 2 allures				



M1	Brennermotor	Moteur du bruleur	Burner motor
T1	Zundtrafo.	Transfo.	Ignition transfo.
Y1	Oelventil Stufe 1	Vanne fuel 1° allure	Oil valve stage 1
Y5	Oelventil Stufe 2	Vanne fuel 2° allure	Oil valve stage 2
Y10	Stellantrieb	Servomoteur	Damper motor
101	Ventilator	Ventilateur	Impeller
102	Pumpe	Pompe	Pump
103	Luftklappe	Volet d'air	Air-damper
104	Druckregler	Régulateur de pression	Pressure regulator
105	Schl auch	Flexible	Flexible
106	Filter	Filtre	Filter
113	Ansauggitter	Grille d'aspiration	Protection
118	Dusen	Gicleur	Nozzle

	Aend. /Modif ication	Dat.	Vis.		Dat.	Vis.
a	AM 8686	27.11.98	Pru	gez.	02.07.98	
b				dess.		
c				gepr.	02.07.98	
d				contr.		



Art. N°:	13005326. A	Type	C 24. . 30 H201	Blatt/Page	3
Bez. /Des. 1	Schéma hydraulique	Schema Draw.	L03. 1. 0136	Tot. Bl /Pg	3
Bez. /Des. 2	Bruleur fuel 2 allures				